

Osaka Gas Releases AVANCE Built-in Stove Equipped with Area Sensors, an Industry-First Technology

May 15, 2019
Osaka Gas Co., Ltd.

Osaka Gas Co., Ltd. (President: Takehiro Honjo hereinafter, "Osaka Gas") has developed the new gas stove "AVANCE" in cooperation with Paloma Co., Ltd. (President: Shinya Nakashima) to reduce anxiety about the possibility that parts of clothing such as bottoms of sleeves could catch fire when cooking, thereby providing greater security and safety. Osaka Gas will start selling the product on June 3, 2019.

The new gas stove is equipped with area sensors,^{*1} an industry-first technology. When the bottom of a sleeve or other object comes close to the flame, the sensors detect it and lower the flame automatically, triggering an alert message. The capacitive touch panels for operating the burners are arranged in the front part of the top plate. The touch panels are frameless, creating a stylish design.

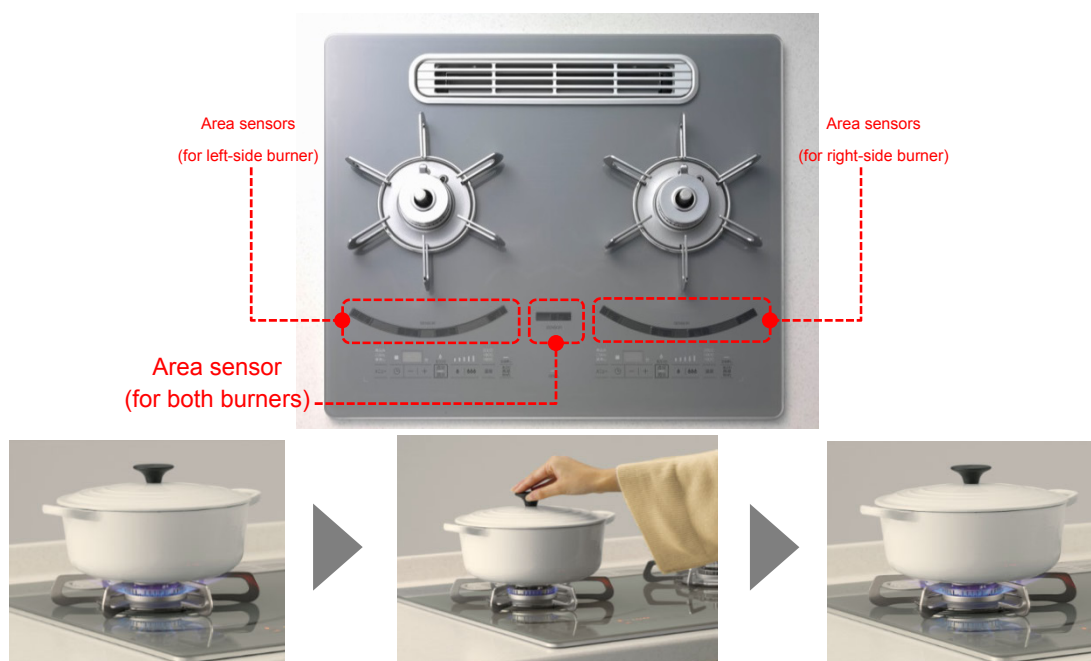
For many years, Osaka Gas has developed technologies to improve the security and safety of gas stove such as *Age-look* (top burner overheat protection control) and *Kie-look* (pilot safety shut-off device) and incorporated them into its products in stages. Osaka Gas hopes to further increase customers' sense of security by adding the area sensors.

Osaka Gas remains committed to developing products and services to become a corporate group that contributes to further advancement in customers' daily lives and business operations.

*1 Osaka Gas has applied to register the trademark of "area sensor."

[Product features]

(1) Nine sensors in total are arranged at three points (left, right, and center) in the front part of the top plate. They detect the presence or access of the bottom of a sleeve or other object and control the flame.



When the sleeve bottom, etc. comes near a burner while cooking, the area sensors are activated to quickly minimize the flame.

The flame returns to normal when the sleeve bottom, etc. is kept away from the sensor. (The maximum flame can be set manually.)

(2) Touch panels for operating the burners are arranged in the front part of the top plate to create a streamlined design.



[Product appearance]



AVANCE
アバンス

Paloma has applied to register the trademark of "AVANCE."