

株式情報 Stock information

1 株式情報 Stock information (2020年3月末時点 As of March 31, 2020)

発行可能株式総数 (株) Common Stock authorized (shares)	700,000,000
発行済株式数 (株) Common Stock issued (shares)	416,680,000
上場証券取引所 Listing of Shares	東京と名古屋の各証券取引所 Tokyo Stock Exchange and Nagoya Stock Exchange
議決権を有する単元株主数 Number of shareholders who own voting rights	88,148

2 大株主の状況 Major Shareholders (2020年3月末時点 As of March 31, 2020)

氏名又は名称 Name of Shareholder	所有株式数 (千株) Number of Sharesheld (thousands)	発行済株式総数に対する所有株式数の割合 (%) Shareholding ratio (%)
日本マスタートラスト信託銀行株式会社 (信託口) The Master Trust Bank of Japan, Ltd. (Trust a/c)	31,935	7.68%
日本トラスティ・サービス信託銀行株式会社 (信託口) Japan Trustee Services Bank, Ltd. (Trust a/c)	22,655	5.45%
日本生命保険相互会社 (常任代理人 日本マスタートラスト信託銀行株式会社) Nippon Life Insurance Company (Standing proxy: The Master Trust Bank of Japan, Ltd.)	19,242	4.63%
株式会社三菱UFJ銀行 MUFG Bank, Ltd.	13,985	3.36%
日本トラスティ・サービス信託銀行株式会社 (信託口7) Japan Trustee Services Bank, Ltd. (Trust a/c 7)	12,389	2.98%
株式会社りそな銀行 Resona Bank, Ltd.	10,555	2.54%
日本トラスティ・サービス信託銀行株式会社 (信託口5) Japan Trustee Services Bank, Ltd. (Trust a/c 5)	7,901	1.90%
JP MORGAN CHASE BANK 385151 (常任代理人 株式会社みずほ銀行) JP MORGAN CHASE BANK 385151 (Standing proxy: Mizuho Bank, Ltd.)	6,935	1.67%
日本トラスティ・サービス信託銀行株式会社 (信託口9) Japan Trustee Services Bank, Ltd. (Trust a/c 9)	6,806	1.64%
STATE STREET BANK WEST CLIENT-TREATY 505234 (常任代理人 株式会社みずほ銀行) STATE STREET BANK WEST CLIENT - TREATY 505234 (Standing proxy: Mizuho Bank, Ltd.)	6,188	1.49%
計 Total	138,596	33.33%

3 所有者別状況 Shareholder composition (3月末時点 As of March 31)

(%)

会計年度	FY	11.3	12.3	13.3	14.3	15.3	16.3	17.3	18.3	19.3	20.3
政府及び地方公共団体	Government and local public organization	0.00	0.00	0.00	0.00	0.00	0.00	0.00	0.00	0.00	0.00
金融機関	Financial institutions	38.38	36.89	35.78	35.06	37.00	38.37	37.87	39.67	40.73	43.42
金融商品取引業者	Financial products trader	0.95	1.50	1.34	1.85	1.62	1.29	1.87	1.73	1.92	1.66
その他の法人	Domestic companies, etc.	10.25	9.95	8.08	8.06	7.69	7.61	7.59	7.36	7.18	7.16
外国法人等	Foreign companies, etc.	19.97	21.97	24.51	26.43	27.06	26.65	27.39	26.64	26.64	24.26
個人 その他	Individuals and others	30.45	29.68	30.29	28.60	26.62	26.08	25.28	24.60	23.54	23.51
計	Total	100.00	100.00	100.00	100.00	100.00	100.00	100.00	100.00	100.00	100.00

4 配当額の推移 Dividend per share history

会計年度	FY	11.3	12.3	13.3	14.3	15.3	16.3	17.3	18.3	19.3	20.3
一株当たり年間配当金(円)	Annual dividends per share (yen)	40.0	40.0	42.5	45.0	47.5	50.0	50.0	50.0	50.0	50.0
年間配当金総額 (百万円)	Annual dividends (million yen)	16,920	16,658	17,698	18,734	19,768	20,804	20,797	20,793	20,791	20,789

* 17.3期以前は、2017年10月の株式併合影響 (5→1株) を考慮して算定

* Prior to FY17.3, calculated based on the assumption of the share consolidation in October 2017. (5 share to 1 share)

5 自己株式の取得状況 Share buy-back

(億円 100 million yen)

会計年度	FY	11.3	12.3	13.3	14.3	15.3	16.3	17.3	18.3	19.3	20.3
自己株式買付総額	Total value of shares repurchased	200	0	0	0	0	0	0	0	0	0

6 株式指標 Share indices

会計年度	FY	11.3	12.3	13.3	14.3	15.3	16.3	17.3	18.3	19.3	20.3
一株当たり当期純利益 (EPS) (円/株)	Earnings per share (EPS) (yen/share)	108.08	108.55	125.99	100.21	184.31	202.64	147.29	90.71	80.80	100.50
株価収益率 (PER) (倍)	Price earnings ratio (PER) (times)	15.36	15.29	16.43	19.51	13.64	10.67	14.36	23.15	27.03	20.26
一株当たり純資産 (BPS) (円/株)	Book value per share (BPS) (yen/share)	1,596.63	1,643.85	1,795.79	1,919.49	2,134.92	2,179.23	2,312.68	2,403.68	2,415.37	2,399.06
株価純資産倍率 (PBR) (倍)	Price book value ratio (PBR) (times)	1.04	1.01	1.15	1.02	1.18	0.99	0.91	0.87	0.90	0.85
一株あたりキャッシュ・フロー (CFPS) (円/株)	Cash flow per share (CFPS) (yen/share)	297.19	294.85	311.21	370.41	377.00	677.25	357.71	405.72	156.59	439.86
株価キャッシュ・フロー倍率 (PCFR) (倍)	Price cash flow ratio (PCFR) (times)	5.59	5.63	6.65	5.28	6.67	3.19	5.91	5.17	13.95	4.63
EV (百万円)	EV (million yen)	1,131,349	1,134,528	1,319,247	1,326,572	1,547,556	1,286,413	1,283,406	1,235,033	1,470,535	1,483,904
EV/EBITDA (倍)	EV / EBITDA (times)	6.01	6.43	7.59	6.94	7.74	5.62	6.81	7.39	9.20	8.20
(参考)EV/EBITDA (倍)	(Reference) EV/EBITDA (times)	6.08	6.64	7.87	7.24	8.02	5.51	6.88	7.40	9.26	8.44
株主資本配当率 (DOE) (%)	Dividend on equity ratio (DOE) (%)	2.5	2.5	2.5	2.4	2.3	2.3	2.2	2.1	2.1	2.1
配当性向 (%)	Payout ratio (%)	37.0	36.8	33.7	44.9	25.8	24.7	33.9	55.1	61.9	49.8
配当利回り (%)	Dividend Yield (%)	2.4	2.4	2.1	2.3	1.9	2.3	2.4	2.4	2.3	2.5
株主総利回り (TSR) (%)	Total shareholders return (TSR) (%)	101.5	103.9	130.9	126.7	162.9	144.9	145.1	147.1	155.2	149.3

* 17.3期以前は、2017年10月の株式併合影響 (5→1株) を考慮して算定

* Prior to FY17.3, calculated based on the assumption of the share consolidation in October 2017. (5 share to 1 share)

一株当たり当期純利益 = 親会社株主に帰属する当期純利益 / 期中平均株式数 (自己株式除く)

Earnings per share = Profit attributable to owners parent / Average number of shares during each fiscal year (excluding treasury shares)

株価収益率 = 期末株価 / 一株当たり当期純利益

Price earnings ratio = Share price (as of the end of the fiscal year) / Earnings per share

一株当たり純資産 = 期末自己資本 / 期末発行済株式数 (自己株式除く)

Book value per share = Shareholders' equity (as of the end of the fiscal year) / Number of shares issued at the end of each fiscal year (excluding treasury shares)

株価純資産倍率 = 期末株価 / 一株当たり純資産

Price book value ratio = Share price (as of the end of the fiscal year) / Book value per share

一株あたりキャッシュ・フロー = 営業活動によるキャッシュ・フロー / 期中平均株式数 (自己株式除く)

Cash flow per share = Cash flows from operating activities / Average number of shares during each fiscal year (excluding treasury shares)

株価キャッシュ・フロー倍率 = 期末株価 / 一株あたりキャッシュ・フロー

Price cash flow ratio = Share price (as of the end of the fiscal year) / Cash flow per share

EV = 期末株価 × 期末発行済株式数 (自己株式除く) + 期末有利子負債残高 + 期末非支配株主持分 - 現金及び現金同等物の期末残高

EV = Share price (as of the end of the fiscal year) × Number of shares issued at the end of each fiscal year (excluding treasury shares) + Interest-bearing debts (as of the end of the fiscal year) + Non-controlling interests (as of the end of the fiscal year) - Cash and cash equivalents (as of the end of the fiscal year)

EBITDA = 営業利益 + 減価償却費 + のれん償却費 (びわ湖ブルーエナジーののれん一括償却除く) + 持分法投資損益

EBITDA = Operating profit + depreciation + amortization of goodwill (BIWAKO BLUE ENERGY Co., Ltd.'s one-time amortization of goodwill is excluded) + share of profit (loss) of entities accounted for using equity method

(参考) EBITDA = 営業利益 + 減価償却費 + のれん償却費 (びわ湖ブルーエナジーののれん一括償却除く)

(Reference) EBITDA = Operating profit + depreciation + amortization of goodwill (BIWAKO BLUE ENERGY Co., Ltd.'s one-time amortization of goodwill is excluded)

株主資本配当率 = 年間配当金総額 / 平均自己資本 × 100

Dividend on equity ratio = Annual dividends / Average shareholders' equity × 100

配当性向 = 一株当たり年間配当金 / 一株当たり当期純利益

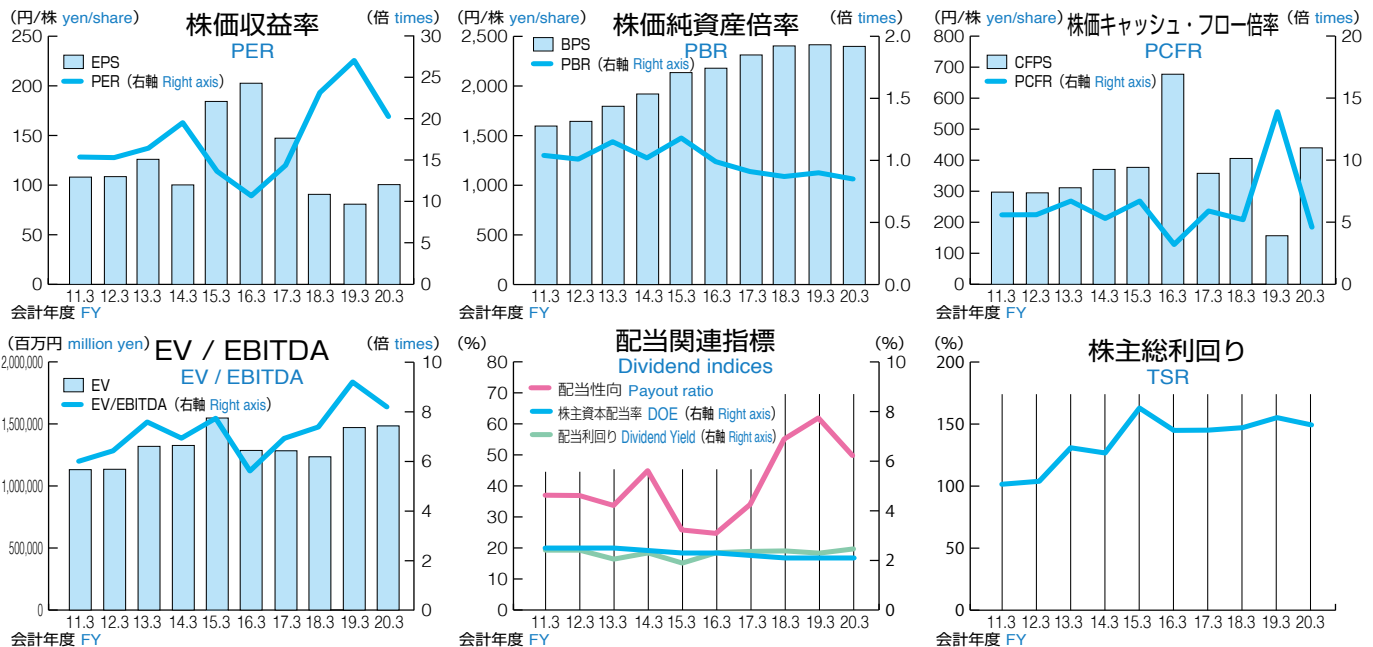
Payout ratio = Annual dividends per share / Earnings per share

配当利回り = 一株当たり年間配当金 / 期末株価

Dividend yield = Annual dividends per share / Share price (as of the end of the fiscal year)

株主総利回り (TSR) = (各事業年度末日の株価 + 11.3期から各事業年度までの一株当たり配当金の累計額) / 10.3期の期末株価

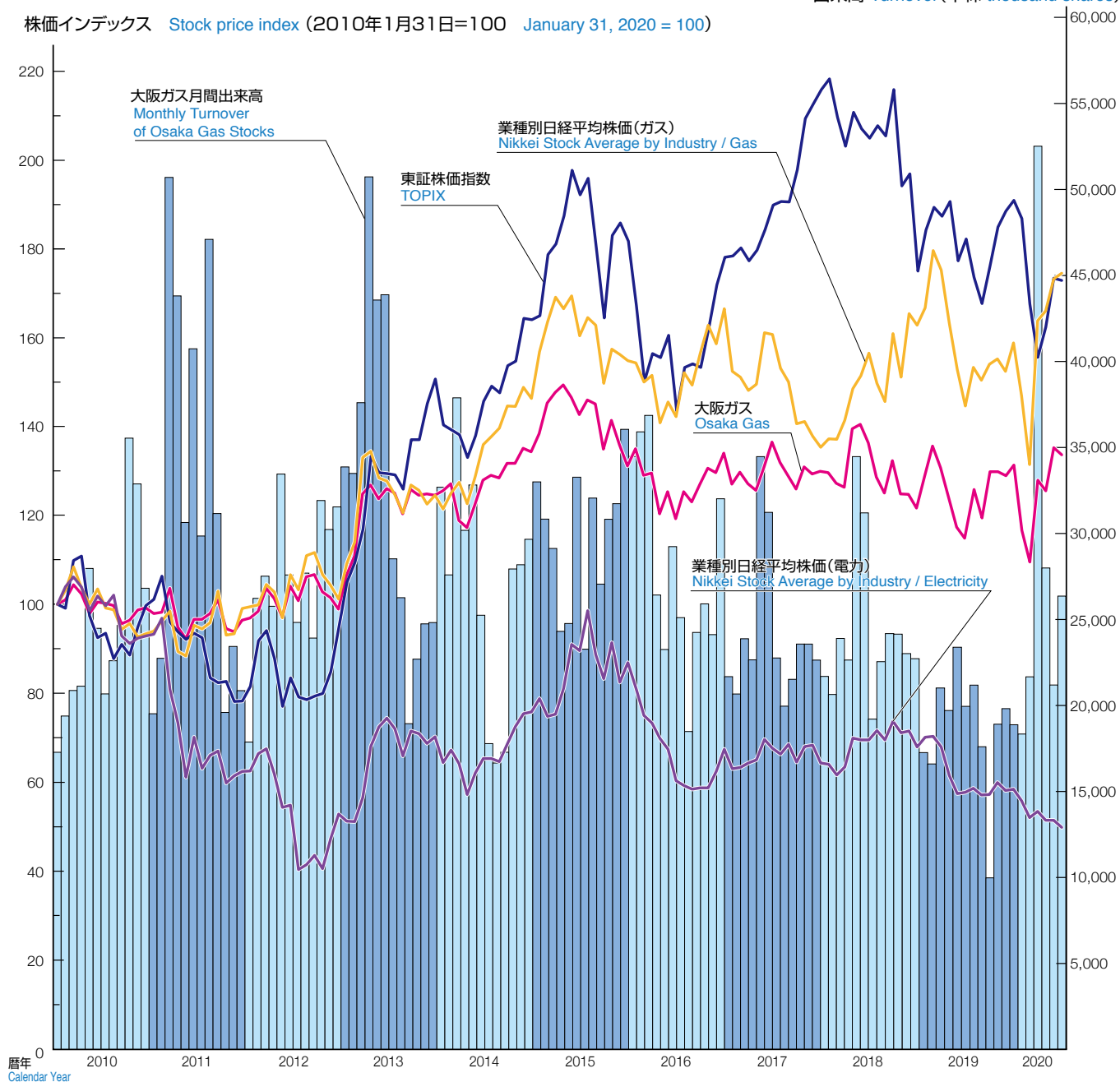
Total shareholders return (TSR) = (Share price (as of the end of each fiscal year) + Annual dividends per share (accumulated from FY11.3 to each fiscal year)) / Share price (as of the end of FY10.3)



7 株価推移 Stock price fluctuation

出来高 Turnover(千株 thousand shares)

株価インデックス Stock price index (2010年1月31日=100 January 31, 2020 = 100)



8 格付の推移 Rating history (6月末時点 As of June 30)

暦年 Calendar year		11.6	12.6	13.6	14.6	15.6	16.6	17.6	18.6	19.6	20.6
長期債 Long-term bond	R&I (格付投資情報センター) Rating and Investment Information, Inc.	AA+	AA+	AA+	AA+	AA+	AA+	AA+	AA+	AA+	AA+
	ムーディーズ Moody's Investors Service	Aa2	Aa3	Aa3	Aa3	Aa3	Aa3	Aa3	Aa3	Aa3	A1
	スタンダード&プアーズ Standard & Poor's	AA-	AA-	AA-	AA-	AA-	AA-	AA-	AA-	AA-	AA-
国内コマーシャルペーパー Domestic Commercial paper	R&I (格付投資情報センター) Rating and Investment Information, Inc.	a-1+	a-1+	a-1+	a-1+	a-1+	a-1+	a-1+	a-1+	a-1+	a-1+
	ムーディーズ Moody's Investors Service	—	—	—	—	—	—	—	—	—	—
	スタンダード&プアーズ Standard & Poor's	A-1+	A-1+	A-1+	A-1+	A-1+	A-1+	A-1+	A-1+	A-1+	A-1+