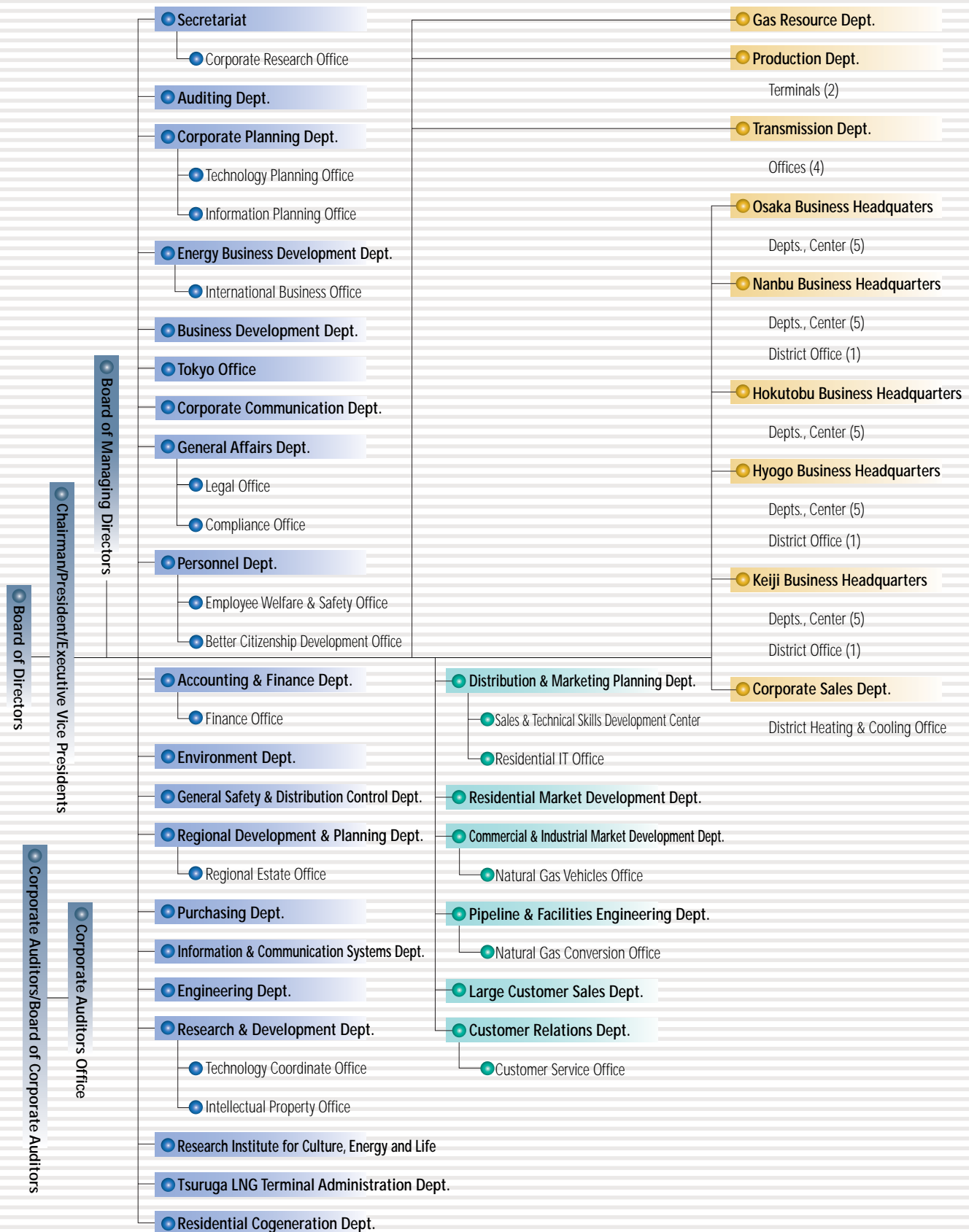


Organization Chart (As of June 27, 2002)



Directors and Corporate Auditors (As of June 27, 2002)



(From front left) **Shin-ichiro Ryoki** and **Akio Nomura**.

(From back left) **Yuji Matsumura**, **Hirofumi Shibano**, **Hironori Yamada** and **Hidetoshi Nakatani**.

Chairman	Shin-ichiro Ryoki	Managing Directors	Yoshikazu Koyama	Directors	Hideaki Nagata
President	Akio Nomura		Tamotsu Okajima		Yoichi Higuchi
Executive Vice Presidents	Hirofumi Shibano		Kunishige Asai		Katsumi Makino
	Hironori Yamada		Seishiro Yoshioka		Hiroshi Ozaki
	Yuji Matsumura		Yukihiro Endo	Corporate Auditors	Toshio Tsuchiyama
Senior Managing Director	Hidetoshi Nakatani	Directors	Masakazu Kato		Kojiro Ambashi
			Susumu Mita		Keizo Hikasa
			Yoshikazu Ishida	Auditors	Reisuke Shimada
			Takashi Nabari		Junjiro Kanamori
			Zenzo Ideta		
			Chiaki Gomi		
			Yoshishige Suzuma		

Directory

Head Office

4-1-2, Hiranomachi, Chuo-ku, Osaka 541-0046
Japan
Tel: (06) 6202-2221
Fax: (06) 6227-0745

Tokyo Office

Shin-Otemachi Building 6F
2-2-1, Otemachi, Chiyoda-ku, Tokyo 100-0004
Japan
Tel: (03) 3211-2551
Fax: (03) 3279-1835

Research & Development Office

6-19-9, Torishima, Konohana-ku, Osaka
554-0051 Japan
Tel: (06) 6462-3231

OVERSEAS REPRESENTATIVE OFFICES

London Office

3rd Floor, Mutual House, Conduit Street,
London W1R 9TQ, U.K.
Tel: (207) 287-8606
Fax: (207) 287-8607

New York Rep. Office

375 Park Avenue, Suite 2109, New York,
NY 10152, U.S.A.
Tel: (212) 980-1666
Fax: (212) 832-0946

Singapore Office

10 Shenton Way, #12-03 MAS Building, Singapore
079117 Republic of Singapore
Tel: (65) 6224-6066
Fax: (65) 6224-3600

Research & Development Office

6-19-9, Torishima, Konohana-ku, Osaka
554-0051, Japan
Tel: (06) 6462-3231

Investor Information (As of July 1, 2002)

Date of Establishment:

April 10, 1897

Regular General Meeting:

The regular general meeting of shareholders is held in June each year.

The 2002 Regular General Meeting was held on June 27.

Common Stock:

Authorized: 3,840,849 thousand shares

Issued: 2,369,012 thousand shares

Listing of Shares:

Osaka Gas's shares are listed for trading on the following stock exchanges in Japan:

Tokyo, Osaka, Nagoya

Number of Shareholders:

203,868

Stock Transaction Units:

The Company's stock is traded in units of 1,000 shares.

Common Stock Price Range (Yen)

(Tokyo Stock Exchange)

	FY2001		FY2002	
	High	Low	High	Low
First quarter	310	252	417	313
Second quarter	315	262	407	364
Third quarter	350	261	402	298
Fourth quarter	347	285	316	290

Independent Certified Public Accountants:

Asahi & Co.

Transfer Agent:

The Sumitomo Trust & Banking Co., Ltd.

1-10, Nikko-cho, Fuchu-City, Tokyo 183-8701, Japan

Tel: (06) 6833-4700

(0423) 51-2211

The Osaka Gas Co., Ltd. Internet web site contains information provided for all investors and is constantly updated.

The address of the Osaka Gas Co., Ltd. web site is:
<http://www.osakagas.co.jp>

For inquiries about this report or requests for other materials, please refer to the contacts listed below:

Osaka Gas Co., Ltd.

Accounting & Finance Dept., Finance Office, IR Group

TEL: +81-6-6202-2221

FAX: +81-6-6227-0745

E-mail: keiri@osakagas.co.jp

Unit conversion list

Weight

kg	Metric ton	Imperial (short) ton	U.S. (long) ton
1	1×10^{-3}	0.984×10^{-3}	1.102×10^{-3}
1,000	1	0.9842	1.1023
1,016.0	1.0160	1	1.1200
907.19	0.9072	0.8927	1

Length

m	ft	yard	mile
1	3.2808	1.0936	0.622×10^{-3}
0.3048	1	0.333	0.189×10^{-3}
0.9144	3	1	0.568×10^{-3}
1,609	5,280	1,760	1

Volume (Liquid)

m ³ (kl)	ft	Imperial gallon	U.S. gallon
1	35.315	219.97	264.17
28.32×10^{-3}	1	6.288	7.481
4.55×10^{-3}	0.1606	1	1.2011
3.78×10^{-3}	0.1337	0.8327	1

1 kl = 6.29 barrel; 1 barrel (42 U.S. gallons) = kl

Volume (Gas)

m ³ (n)	m ³ (s)	SCF
1	1.055	37.33
0.9476	1	35.37
0.0268	0.0283	1

n:0°C, S: 15°C, SCF:101.33kPa, 15.5°C (60°F)

Energy

kcal	Btu	MJ	kWh
1	3.969	4.186×10^{-3}	1.162×10^{-3}
0.2520	1	1.055×10^{-3}	0.2929×10^{-3}
238.9	948.2	1	0.2778
860.1	3,414	3.600	1

Heating Value (Gas)

kcal/m ³ (n)	Btu/SCF	MJ/m ³ (s)
1	0.1063	3.97×10^{-3}
9.406	1	3.73×10^{-3}
252.1	26.81	1

1 ton of LNG = 13×10^6 kcal = 52×10^6 Btu



Osaka Gas Co., Ltd.

4-1-2, Hiranomachi, Chuo-ku, Osaka 541-0046, Japan

Tel:(06)6202-2221

Fax:(06)6227-0745

Homepage:<http://www.osakagas.co.jp>