

株式分析 Stock Analysis

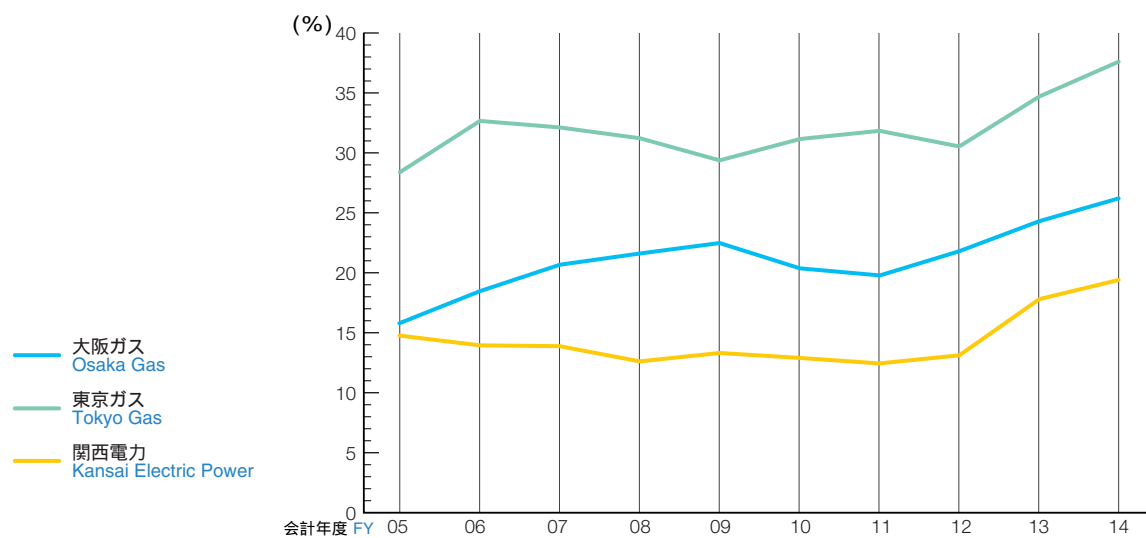
1 所有者別状況 Distribution of shares by type of shareholder

会計年度 FY	株主数 Number of Shareholders			所有株式数(千株) Number of Shares (thousand)		
	04.3	09.3	14.3	04.3	09.3	14.3
政府及び地方公共団体 Public bodies	2 (0.0%)	3 (0.0%)	2 (0.0%)	30 (0.0%)	35 (0.0%)	30 (0.0%)
銀行及び保険会社 Banks and insurance companies	221 (0.1%)	147 (0.1%)	152 (0.1%)	878,641 (37.1%)	760,515 (35.2%)	724,754 (34.8%)
証券会社 Security companies	69 (0.0%)	57 (0.0%)	48 (0.0%)	22,331 (0.9%)	18,844 (0.9%)	38,224 (1.8%)
その他の法人 Other businesses	1,335 (0.6%)	1,057 (0.7%)	894 (0.7%)	223,560 (9.4%)	207,777 (9.6%)	166,840 (8.0%)
外国人 Non-Japanese	369 (0.2%)	513 (0.3%)	522 (0.4%)	235,758 (10.0%)	483,862 (22.4%)	546,588 (26.2%)
個人その他 Individuals and others	203,754 (99.0%)	160,762 (98.9%)	130,024 (98.8%)	870,455 (36.7%)	684,288 (31.7%)	604,750 (29.0%)
自己名義株式 Treasury stocks	1 (0.0%)	1 (0.0%)	1 (0.0%)	138,237 (5.8%)	3,063 (0.1%)	2,214 (0.1%)
計 Total	205,751 (100.0%)	162,540 (100.0%)	131,643 (100.0%)	2,369,012 (100.0%)	2,158,384 (100.0%)	2,083,400 (100.0%)

2 所有数別状況 Distribution of shares by size of holding

会計年度 FY	株主数 Number of Shareholders			所有株式数(千株) Number of Shares (thousand)		
	04.3	09.3	14.3	04.3	09.3	14.3
1,000,000~	171 (0.1%)	186 (0.1%)	195 (0.1%)	1,364,715 (57.6%)	1,332,503 (61.7%)	1,376,804 (66.1%)
500,000~	84 (0.0%)	88 (0.1%)	88 (0.1%)	58,461 (2.5%)	61,698 (2.9%)	59,518 (2.9%)
100,000~	490 (0.2%)	450 (0.3%)	434 (0.3%)	93,574 (3.9%)	92,539 (4.3%)	86,769 (4.2%)
50,000~	731 (0.4%)	646 (0.4%)	617 (0.5%)	46,977 (2.0%)	41,624 (1.9%)	39,475 (1.9%)
10,000~	25,073 (12.2%)	19,880 (12.2%)	16,495 (12.5%)	396,210 (16.7%)	320,571 (14.9%)	267,598 (12.8%)
5,000~	29,029 (14.1%)	22,187 (13.7%)	18,054 (13.7%)	187,285 (7.9%)	141,369 (6.5%)	114,695 (5.5%)
1,000~	110,905 (53.9%)	84,430 (51.9%)	70,385 (53.5%)	213,675 (9.0%)	160,819 (7.5%)	133,195 (6.4%)
~ 999	39,268 (19.1%)	34,673 (21.3%)	25,375 (19.3%)	8,115 (0.3%)	7,260 (0.3%)	5,347 (0.3%)
計 Total	205,751 (100.0%)	162,540 (100.0%)	131,643 (100.0%)	2,369,012 (100.0%)	2,158,384 (100.0%)	2,083,400 (100.0%)

3 外国人持株比率 Percentage of shares held by non-Japanese shareholders



会計年度 FY	05.3	06.3	07.3	08.3	09.3	10.3	11.3	12.3	13.3	14.3
大阪ガス Osaka Gas	15.8	18.5	20.7	21.5	22.4	20.3	19.8	21.8	24.3	26.2
東京ガス Tokyo Gas	28.4	32.7	32.1	31.2	29.3	31.1	31.8	30.6	34.7	37.6
関西電力 Kansai Electric Power	14.6	13.9	13.8	12.7	13.4	12.9	12.4	13.1	16.8	19.4

4 配当状況 Dividends payment

会計年度 FY	05.3	06.3	07.3	08.3	09.3	10.3	11.3	12.3	13.3	14.3
一株当たり 年間配当金 (円) Annual dividends per share (yen)	6.0	7.0	7.0	7.0	7.0	7.0	8.0	8.0	8.5	9.0

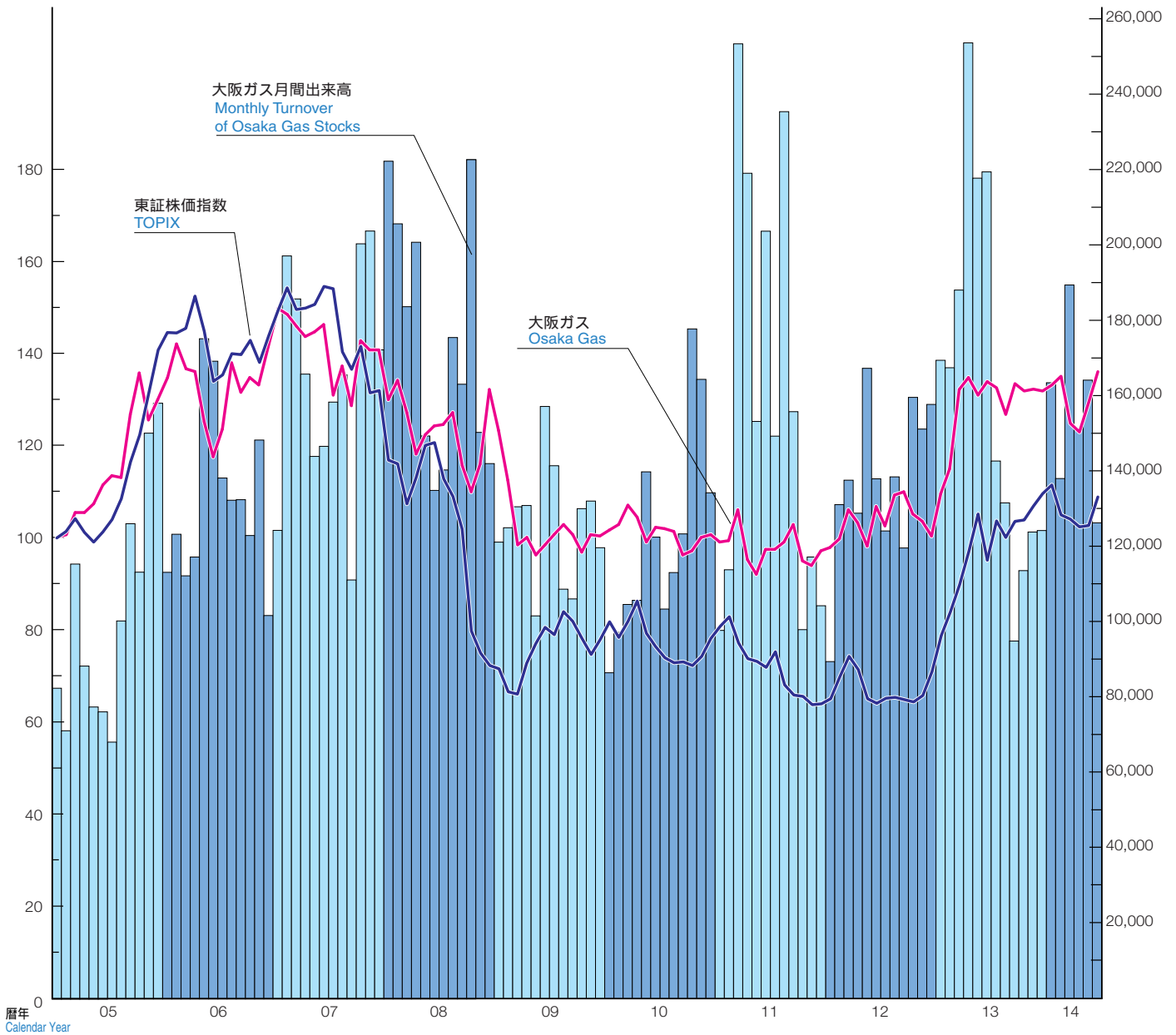
5 自己株式取得状況 Share buy-back

会計年度 FY	05.3	06.3	07.3	08.3	09.3	10.3	11.3	12.3	13.3	14.3
自己株式 買付総額 (億円) Total value of shares repurchased (100 million yen)	0	0	0	300	0	0	200	0	0	0

6 株価推移 Stock price fluctuation

株価インデックス Stock price index (2005年1月=100 January 2005=100)

出来高 Turnover(千株 thousand shares)



株価データ Stock price data

暦年 Calendar year		04	05	06	07	08	09	10	11	12	13	14
大阪ガス Osaka Gas (円/株) (yen/stock)	高値 High	320	440	460	513	459	422	340	334	350	487	440
	安値 Low	291	306	344	394	282	288	278	265	299	315	370
東証株価指数 TOPIX	高値 High	1,217.87	1,663.75	1,783.72	1,816.97	1,430.47	975.59	998.90	974.63	872.42	1,302.29	1,306.23
	安値 Low	1,022.61	1,109.19	1,458.30	1,437.38	746.46	700.93	803.12	706.08	695.51	871.88	1,132.76
大阪ガス年間出来高(千株) Annual turnover of Osaka Gas stocks (thousand)		1,067,715	1,227,540	1,587,410	1,979,450	2,099,061	1,557,570	1,471,253	1,900,542	1,642,738	1,945,807	931,793

2014年は6月まで Until June 2014

会計年度 FY		04.3	05.3	06.3	07.3	08.3	09.3	10.3	11.3	12.3	13.3	14.3
大阪ガス年度末終値(円/株) Osaka Gas Stock price at Fiscal Year end (yen/stock)		311	330	428	457	398	308	335	332	332	414	391

債券格付け Bond Ratings

1 エネルギー会社の長期債格付け Ratings for long-term bond of major energy companies

	国 Country	R&I(格付投資情報センター) Rating and Investment Information, Inc.	ムーディーズ Moody's Investors Service	スタンダード&プアーズ Standard & Poor's
大阪ガス Osaka Gas	日本 Japan	AA+	Aa3	AA-
東京ガス Tokyo Gas	日本 Japan	AA+	Aa3	AA-
東京電力 Tokyo Electric Power	日本 Japan	BBB-	B1	B+
関西電力 Kansai Electric Power	日本 Japan	A	A3	——
中部電力 Chubu Electric Power	日本 Japan	A+	A3	——
ナショナルグリッド National Grid	米国・英国 USA, UK	——	Baa1	A-
パシフィック・ガス・アンド・エレクトリック Pacific Gas & Electric	米国 USA	——	A3	BBB
セントリカ Centrica	英国 UK	——	A3	A-

2014年6月末時点。格付けの表示詳細については、各格付け会社のホームページ等を参照下さい。
As of the end of June, 2014. Please refer to each rating company's website if details of ratings are required.

2 大阪ガスの信用格付け Credit rating of Osaka Gas

格付け機関 Credit rating agency	長期債 Long-term Bond	国内商業紙 Domestic Commercial Paper
R&I(格付投資情報センター) Rating and Investment Information, Inc	AA+	a-1+
ムーディーズ Moody's Investors Service	Aa3	——
スタンダード&プアーズ Standard & Poor's	AA-	A-1+